

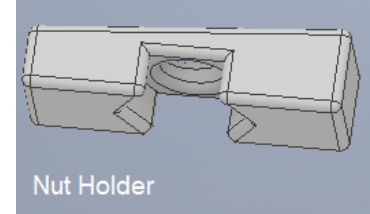
**THANK YOU FOR YOUR PURCHASE!** We've gone to great effort to design these accessories for Sports Afield safes. If you have comments or suggestions for improvement, more items etc: Please let us know! We are always looking to do better. *Fasteners required to install barrel rests are not included.*



To install scope standoffs the items required & provided, **2ea per stand-off: M4x25 flat head screws, M4 Nuts, & Plastic Nut Holders**

Tools Required to install scope stand off's (not provided)

- Drill, Phillips (+) Driver (for M3 flat head screws)
- 3/16 drill bit (or #13/4.5mm drill bit) for making holes in the original barrel rest
- Electric drill/screw gun



## **GENERAL PREPARATIONS & SAFETY**

**ALWAYS CONSULT THE FIREARM'S OWNER'S MANUAL, UNLOAD YOUR FIREARMS, & REMOVE THEM FROM THE WORK AREA BEFORE COMMENCING ANY WORK! DO NOT STORE LOADED FIREARMS IN OUR ORGANIZERS! THEY ARE FOR ACCESSORIES & UNLOADED FIREARMS ONLY.**

WARNING: Installing organizers & modifying the cabinet will require the use of power tools, generate debris & unplanned interactions between the installer, tools, equipment, cabinet, & anything in the vicinity. It is paramount that you protect your life, health, & property by unloading & removing all firearms from the work space.

DO NOT ATTEMPT TO INSTALL THESE ITEMS IF YOU DO NOT HAVE THE SKILLS, HEALTH, & ABILITY TO DO SO SAFELY. Consult local licensed professionals for assistance if needed!

NEVER PLACE ANY LOADED FIREARMS IN ONE OF OUR ORGANIZERS, AGAINST OUR BARREL RESTS, & STAND-OFFS, ETC!

## **STAND-OFFS & BARREL RESTS:**

Badger Ridge Barrel Rests & Scope Stand-offs replicate the items that came with the safe. Reviewing the safe's instructions may prove useful. The barrel rests & scope stand-offs are especially useful to supplement shortages from the original accessories, & to create solutions for short firearms (SBR, SBS, youth models, collapsible/folding stocked rifles, etc), & firearms with raised sights.

**Shorter firearms:** The barrel rests can be mounted similar to the original barrel rest but lower in the cabinet. Affix them like the barrel rests provided with the original cabinet, per the cabinet's instructions:

1: Locate where the barrel rest is needed, mark & drill holes as needed & Insert desired screw receptacle (not provided). To locate receptacle: be sure to use a level: Marking hole locations with a center punch, nail, or thin sharp item is helpful prior to drilling.

1a: Deburr any drilled holes as needed & install receptacles to take the barrel rests's screws.

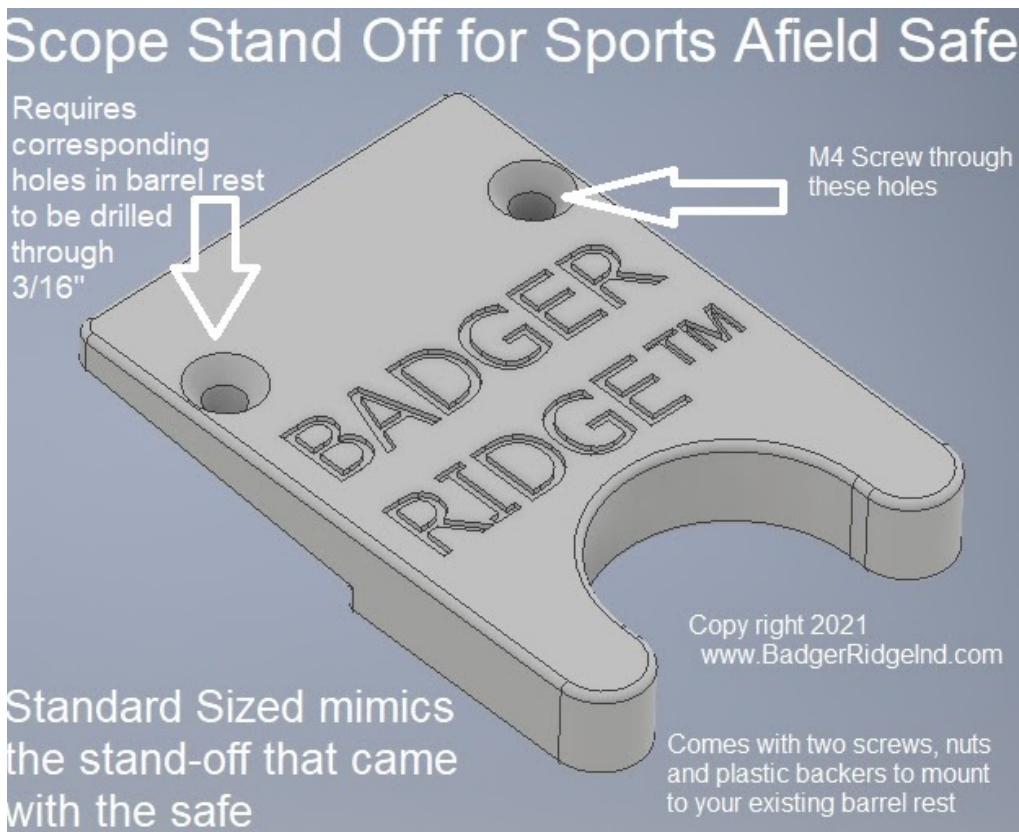
2: The Barrel Rest is mounted to the interior wall of the cabinet by fastening a screw (not provided) from each of the counter sunk holes on the face & into the new screw receptacle. Do not over tighten.

**Scoped Rifles/raised sight rifles:** If a firearm needs to be farther off the wall than a barrel rest will provide (due to a scope or raised sight etc) add a scope stand off to the barrel rest:

IT IS ADVISED THAT THE BARREL REST IS REMOVED FROM THE INSIDE OF THE SAFE & THE SCOPE STAND-OFF AFFIXED TO IT AT A SUITABLE WORK TOP. THEN THE BARREL REST WITH SCOPE STAND OFF ARE INSTALLED BACK INTO THE SAFE AS A SINGLE UNIT.

## Badger Ridge's Barrel Rest & Scope Stand-Off Installation Instructions for Sports Afield Safes

- 1: Remove barrel rest to receive the Scope Stand-off from safe
- 2: Wherever a Badger Ridge Scope Stand off is desired: Drill 3/16 holes through the plastic of the factory original barrel rest using the existing hole that the OEM scope stand off snapped into as a guide. Minimize altering the inside diameter of the existing snap in hole if you ever want to place a snap in scope stand off in the hole. (Badger Ridge Scope Stand-offs are held in place via the screws, nuts, & nut holders provided). Note: Badger Ridge Barrel Rests come with 3/16 through holes (drilling them is not needed).
- 3: Thread a nut to the end of each M4 screw, then use the M4 screw as a tool to place the nut into the plastic Nut Holder. The Nut Holder should grasp the screw firmly to distribute the stress of tightening a screw. Once the nut holder has fully grasped the nut, remove the M4 screw.
4. Place the M4 screws through the holes of the scope stand off so that the head sits flush to the plastic when it is seated into the counter sink on the top of the scope stand off.
5. Place the Scope standoff/screws onto the barrel rest by fitting the screws through the barrel rest's 3/16 holes.
6. Thread the nut held in place by the Nut Holders on to the end of the M4 screw. The nut should pinch the plastic Nut Holder between it & the barrel rest. Note that the nut holder has a slight taper to it in order to account for the taper on the barrel rest. The fatter/thicker part of the Nut Holder should face away from the vertical wall of the barrel rest (the fat part goes outward, towards the U of the scope stand off that will hold the firearm's barrel).



to account for the taper on the barrel rest. The fatter/thicker part of the Nut Holder should face away from the vertical wall of the barrel rest (the fat part goes outward, towards the U of the scope stand off that will hold the firearm's barrel).

**DO NOT MOUNT THE STAND OFF UNLESS THE NUT IS PINCHING THE NUT HOLDER to the Barrel Rest**

**WARNING: Do not over tighten screws. Failure to squeeze nut holder between each nut & the barrel rest, align the nut holder's taper properly, or over tightening will crack or damage barrel rests.**